



# iON Digital Campus

Redefine educational experience



Today, the educational sector is abuzz with a noted increase in the number of campuses, student enrollment and digital learning platforms. With such a high increase in the numbers, institutions have to optimize resources by adopting standardized systems and procedures. With campus efficiency being the new catchphrase, collaborative tools and effective learning content management systems are the definite need of the hour. While institutions foresee this need for change, there can also be a resistance to automate academic backend processes. To address this, we at Tata Consultancy Services (TCS), offer the iON Education Solution – a suite of IT offerings designed to help educational institutions manage their campuses efficiently and with greater success. These offerings help in steering core and support functions as well as in managing institutional resources to achieve improved accountability and transparency, while attracting global students and the best faculty.

The iON suite of offerings is modular in nature, that means it can automate certain functions within your institution depending on preference and suitability. This enables the institution to be ahead of the curve through swift and sure IT implementation across the board. One of the greatest advantages of the iON solution is faster configuration and its plug and play nature. It prompts customer involvement during the configuration process and also allows provisioning for additional solutions and services to be added at a later stage.

## Overview

iON Digital Campus Solution comprises a suite of offerings, catering to seasonal academic events, mapped to specific departments of an institution. Our solution facilitates the entire student lifecycle management from enquiry to alumni. With Pre-built business processes and easy-to-configure solution capabilities, institutions can start using the system with minimal implementation time and effort. To make the delivery process smooth and effective for the end users, some of the modules are available in a Managed Services model as well.

### **Student Lifecycle:**

The Student Lifecycle module digitizes a student's lifecycle processes, such as Online Application, Admission, Fee, Timetable, Attendance, Exam and Grading, Feedback, Library, Transport and Hostel. In addition, it provides a holistic view of the transactional history of a student in a single screen, from the time of admission till separation, across several academic years. It helps to ensure student profile data is complete and time and effort spent by administration staff in maintaining student data to the minimum.

### **Faculty Lifecycle:**

The faculty Lifecycle module helps to manage the end to end processes of employees such as Recruitment,

Leave, Attendance, Payroll, Trainings, Travel, Claims, Loans, Promotions, Appraisals, Separation and assets. In addition to this, the academic activities of a teacher such as managing Time-table, Marking attendance, Capturing Exam marks are all digitized to enable them to manage their administrative tasks with ease.

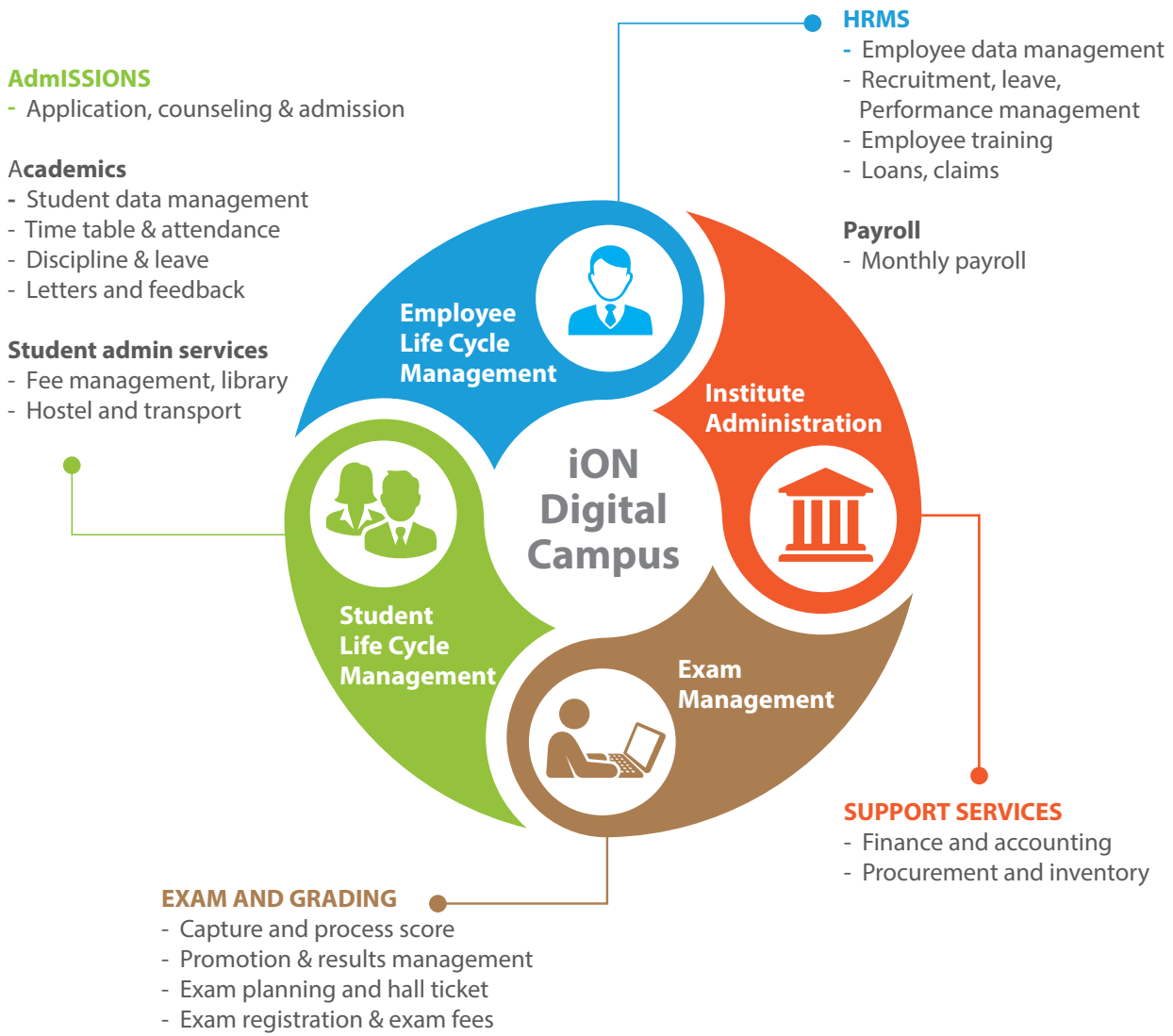
### **University Life Cycle Management:**

It helps to manage Institute Affiliation, Student Counselling, College Allotment, Student enrollments/university registration, Curriculum Management, Student Results, Issue & verification of Degrees.

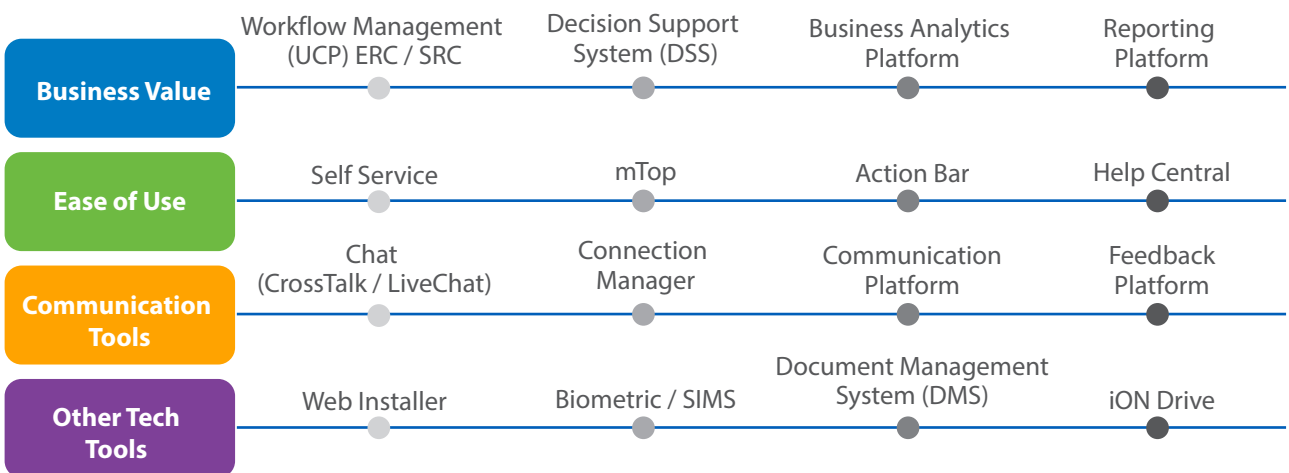
### **Institute Administration:**

The administrative module addresses all aspects of financial accounting and ensures that accounts are accurate and consistent, across different campuses. It manages the Human Resources component, including the faculty, administrative and other staff. The solution also automates the Procurement and Inventory processes, and brings in more accuracy by overcoming the limitations of manual paperwork. Moreover, it handles end-to-end payroll services, thus managing the complete Payroll cycle of the organization.

The Education Solution comprises five offerings plus specific add-on solutions.



### Unique Technology Differentiators



## Benefits to your business

The iON Digital Campus is designed to provide the following business benefits:

- **Ease of use:** The solution is quickly configurable, enabling you to adopt it instantly. The features and the user interface are designed to help you adapt to the solution and use it effectively.
- **Flexibility:** The solution enables you to choose the offering that is most relevant to your need and our delivery model is designed to help you adopt the offering immediately to your advantage.
- **Effective use of resources:** You can save time and effort required of various resources and faculty or manage infrastructure during complex seasonal events such as admissions. iON takes on the responsibility, saving faculty time and reducing infrastructure requirements.
- **Seamless experience:** Our solution provides function, department, and process-specific offerings and they work together to offer a seamless experience to the user.
- **Business analytics:** The solution enables generation and viewing of reports and a library of report templates, providing readily available solution-wise report templates for organizational use. It also helps in transmitting information through SMS or email within and outside the organization.
- **Faster Configuration:** Best in class business processes are pre-embedded in iON which makes it easier to implement the entire solution in 3-6 months.

## Why iON

iON provides a comprehensive solution that addresses varied IT requirements of your organization. From hardware, network to ERP, iON is offered as a single service, in a pay-as-you-use model, allowing you to leverage the solution's true potential as your business grows. iON ensures integration of all processes along with ease of use of the software.

You gain from:

### **Integrated solutions**

We offer single-window IT with a pre-integrated suite of hardware, network, software and services. We ensure that your functions are digitized, automated and connected. For example, if you are using iON Finance and Accounting solution along with a core ERP (e.g. Digital Campus), and have an HR Solution with Employee data other than employee financials, and a Payroll solution for processing employee Salaries, we ensure that these solutions are connected and work as one. So for you, it is simply one IT and not multiple applications. Integrated applications thus provide a comprehensive view of business enabling better decisions.

### **Increased agility**

We bring in the agility to keep pace with changing processes or a new line of business. We help you configure the processes to work as you currently do or the software recommends and allows you to choose industry best practices based on your business parameters. The solution gives you increased convenience allowing you to perform various tasks from your mobile device, no matter where you are. Being automatically compliant with statutory requirements, the solution ensures your company is always audit ready and legally compliant.

### **A pay-as-you-use model**

Our model eliminates capital investment up front as we facilitate procurement of the IT infrastructure and software on rent for the duration of the contract. Additionally, you only pay for the number of users who actually use the software. Thus, you pay as you use on a monthly basis which includes maintenance and training. Typically, the ROI exceeds rental within three months, when best practices are well followed.

### **Personalized solutions**

Although iON is a cloud service, the software is configurable to each business. You will always get the flavor of your business by picking and choosing what processes you would need. Furthermore, the multilingual capability of the software allows you to customize the solution label names to read in vernacular languages (like Hindi, Marathi, Tamil etc) enabling users to learn and operate the solution with ease.

### **Automatic upgrades**

We continuously invest in our solutions to incorporate best practices. The software is constantly enriched based on user feedback and industry and statutory changes. You will get the upgrades without disrupting your business operations or any additional cost. Being in perpetual beta ensures that there is no technology obsolescence.

### **Enhanced Business Continuity**

Our solution offers optimal performance in normal broadband connectivity along with a stringent security mechanism to ensure your data privacy is maintained. The capacity of the solution grows with your increasing computing needs and reduces the need for IT staff. The solution is resilient to failures as the service works from back-up data centers in the event of a disaster, ensuring continuity of business operations.



## About TCS iON

TCS iON is a strategic business unit of Tata Consultancy Services focused on enabling institutions, government departments and organisations from multiple industry sectors to be efficient in their recruitment/admissions process, learning and skilling and overall business operations with the use of Phygital platforms. These are platforms that overlay digital technologies over physical assets.

We deliver this with a unique IT-as-a-Service model that provides easy-to-use, secured, integrated, and hosted solutions in a build-as-you-grow and pay-as-you-use business model. We serve our clients with the help of best practices gained through TCS' global experience, deep domestic market exposure along with industry leading technology expertise.

For more information, visit us at [www.tcsion.com](http://www.tcsion.com)

## Contact

To know more about the iON Digital Campus  
Toll Free Number 1800 209 6030  
Email [ion.salessupport@tcs.com](mailto:ion.salessupport@tcs.com)

## About Tata Consultancy Services Ltd (TCS)

Tata Consultancy Services is an IT services, consulting and business solutions organization that delivers real results to global business, ensuring a level of certainty no other firm can match. TCS offers a consulting-led, integrated portfolio of IT, BPS, infrastructure, engineering and assurance services. This is delivered through its unique Global Network Delivery Model™, recognized as the benchmark of excellence in software development. A part of the Tata group, India's largest industrial conglomerate, TCS has over 387,000 of the world's best-trained consultants in 45 countries. The company generated consolidated revenues of US \$17.6 billion for year ended March 31, 2017 and is listed on the BSE (formerly Bombay Stock Exchange) and the NSE (National Stock Exchange) in India.

For more information, visit us at [www.tcs.com](http://www.tcs.com)

Follow us on:  | [www.tcsion.com](http://www.tcsion.com)

All content / information present here is the exclusive property of Tata Consultancy Services Limited (TCS). The content / information contained here is correct at the time of publishing. No material from here may be copied, modified, reproduced, republished, uploaded, transmitted, posted or distributed in any form without prior written permission from TCS. Unauthorized use of the content / information appearing here may violate copyright, trademark and other applicable laws, and could result in criminal or civil penalties.  
Copyright © 2017 Tata Consultancy Services Limited